

Technical data



ROBBY

Filling rate: depending on feed element up to 2,700 kg/h

Portion weight: 5 - 60,000 g, can be set in increments of 0.1 g or 1 g

Portioning speed: up to 650 portions/min. (depending on product, casing and portion size)

Rotary vane speed: 0 - 100%, infinitely adjustable

Links: 0 - 10, infinitely adjustable

Vacuum system: 16 m³/h

Hopper contents: 80 l / 110 l (optional) / 230 l (optional)

Weight: approx. 425 kg

Total nominal output: 5.1 kW at 50/60 Hz

Main motor: 2.1 kW at 50/60 Hz

Mains voltage	Frequency	Nom. cur.	Back-up fuse
220 - 240 V	50/60 Hz	14 A	20 A
400 - 460 V	50/60 Hz	8 A	20 A

ROBBY-2

Filling rate: depending on feed element up to 3,000 kg/h

Portion weight: 5 - 60,000 g, can be set in increments of 0.1 g or 1 g

Portioning speed: up to 650 portions/min. (depending on product, casing and portion size)

Rotary vane speed: 0 - 100%, infinitely adjustable

Links: 0 - 10, infinitely adjustable

Vacuum system: 16 m³/h

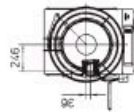
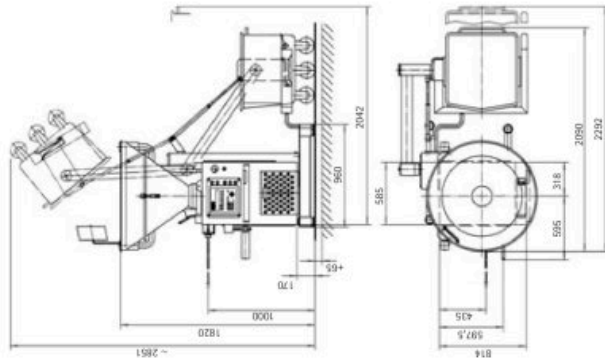
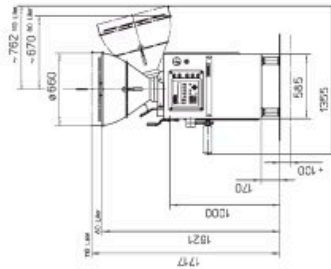
Hopper contents: 230 l / 80 l (optional) / 110 l (optional)

Weight including lifting and tipping device: approx. 740 kg

Total nominal output: 7.2 kW at 50/60 Hz

Main motor: 3.8 kW at 50/60 Hz

Mains voltage	Frequency	Nom. cur.	Back-up fuse
220 - 240 V	50/60 Hz	19 A	25 A
400 - 460 V	50/60 Hz	11 A	20 A



VEMAG Maschinenbau GmbH
Postfach 1620, D-27286 Verden
Phone +49 42 31-77 70, Fax +49 42 31-77 72 41
<http://www.vemag.de>, e-mail vemag@vemag.de

Handed over by:



ROBBY and ROBBY-2

The vacuum fillers with rotary vane pump for small and medium-sized plants



TO MAKE GOOD THINGS EVEN BETTER