



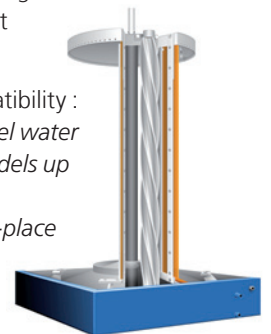
The Flake Ice Generators

Production from 500 to 50 000 kg / 24 h.

The Flake Ice Generators

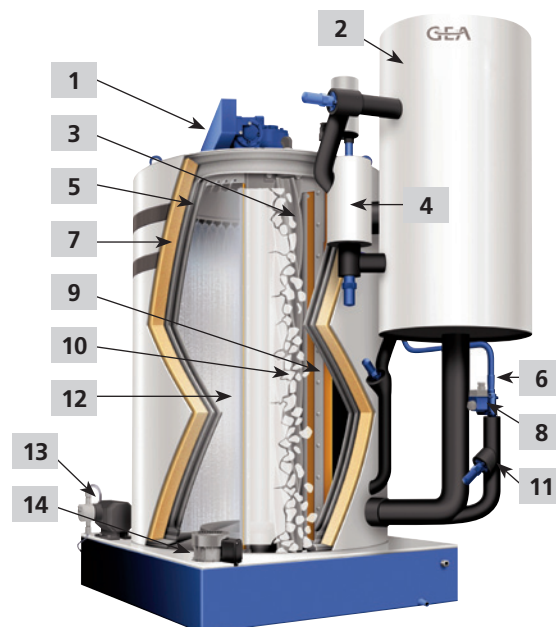
Land-based models						
Water	Model	Production kg /24h	fluid	Dimensions LxWxH (CM)	Weight (Kg)	Installed power (W)
Fresh Water	F15	300 - 500 kg	R404A - C02	52 x 36 x 60	50	160
	F30	600 - 1 000 kg	R404A	65 x 50 x 70	90	250
	F90	1 600 - 3 500 kg	R404A	89 x 73 x 126	250	250
Sea Water	F90 SW	3 000 kg	R404A	90 x 70 x 126	250	305
Fresh Water	F200*	4 500 - 6 500 kg	R717- R404A	120 x 92 x 176	720	320
	F250*	7 000 - 10 000 kg	R717- R404A	130 x 97 x 205	900	320
	F600*	10 000 - 14 000 kg	R717- R404A	150 x 120 x 205	950	390
	F800*	14 000 - 20 000 kg	R717- R404A	155 x 155 x 310	2500	850
	F900*	20 000 - 30 000 kg	R717- R404A	195 x 195 x 310	3100	850
	F2000*	40 000 - 50 000 kg	R717- R404A	244 x 244 x 310	5000	1150
	On-board models					
Fresh Water	F30 M	1 000 kg	R404A	75 x 50 x 120	90	215
	F100 M	2 500 kg	R404A	90 x 70 x 160	220	305
Sea Water	F100 SW	2 700 kg	R404A	90 x 70 x 150	220	305

- Dry and subcooled ice.
- Stationary and insulated cylinder.
- Few moving parts liable to wear and tear.
- Few mechanical constraints.
- Optimum thermal exchange.
- Compatible with all modern refrigerants.
- CE and ASME Compliant.
- Manufacturing under independant survey.
- Food compatibility : *stainless steel water path for models up to 10 tons. Cleaning-in-place optional.*



* Each ice generator is available :

- either with flood bottle (ABF version) for feeding with high pressure liquid.
- or without flood bottle (SBF version) for feeding with low pressure liquid (flooded system).



- 1 Heavy-duty gear reducer *Adjustable speed*
- 2 Flood bottle
- 3 Helical reamer *Continuous ice harvesting*
- 4 Refrigerant Liquid Level Control
- 5 Double wall stationary drum *Pressure tested at 26 bars - no sealed bearings*
- 6 HP liquid line
- 7 CFC-free insulation with PVC
- 8 Solenoid valve
- 9 Rubber wiper
- 10 Dry and sub-cooled flake-ice *Large heat-exchange surface area*
- 11 Hand-throttle valve
- 12 Evaporating surface *High-conductivity corrosion shield*
- 13 Salt dosing pump
- 14 Heavy-duty water pump

GEA Refrigeration Technologies

GEA Refrigeration France S.A.S
Technology Centre Ice Machines

9 rue des Orfèvres - 44840 Les Sorinières (France)
Tel.: +33 (0)251 19 10 51 - Fax : +33 (0)240 05 73 81
www.gea.com - refrigeration@gea.com

We live our values

Excellence • Passion • Integrity • Responsibility • GEA-versity